

# DALMATIAN TOADFLAX

(*Linaria dalmatica*)

**GROWTH HABIT:** Perennial, often over 3 feet tall, erect.

**LEAVES:** Light green, alternate, broad, heart-shaped, clasping the stem.

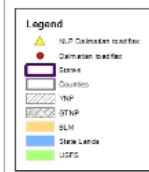
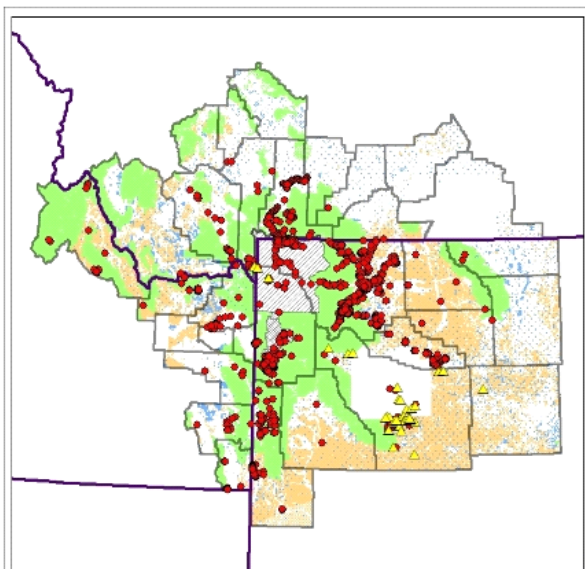
**STEMS:** Branching, light green, smooth and leafy.

**FLOWERS:** Snapdragon type, bright yellow, tinged with orange, to 1½ inch long spur, born in upper leaf axils.

**ROOTS:** Vigorous, deep and extensive, creeping roots.

**SEEDS:** Numerous, irregularly angled.

**OTHER:** Spread by seed and creeping roots.



MAP: DALMATIAN TOADFLAX

TERRESTRIAL PLANT SUBCOMMITTEE  
GREATER YELLOWSTONE COORDINATING COMMITTEE  
NO SCALE  
NOTE: DATA CURRENT AS OF 12/31/2010