

CHEATGRASS

(*Bromus tectorum*)

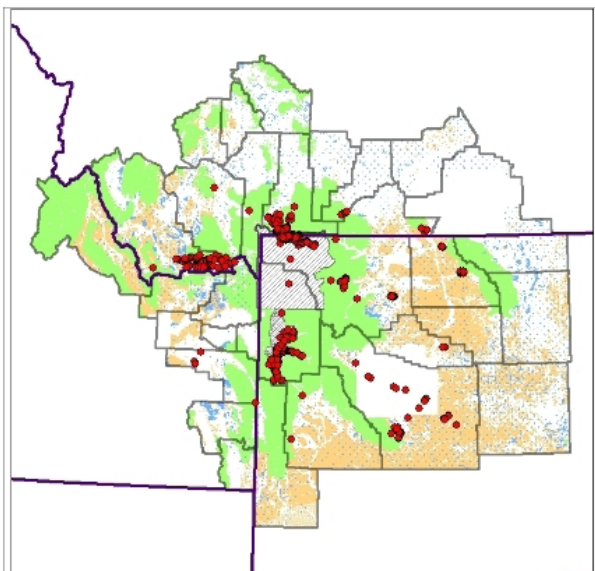
GROWTH HABIT: Annual grass that forms tufts 4 to 30 inches tall.

LEAVES: Leaf sheaths and flat blades are covered in short, soft hairs.

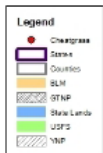
OTHER: Inflorescence is dense, slender, usually drooping, one-sided, 2 to 6 inches long; spikelets are nodding, slender 3/8 to 3/4 inch long; awns are 3/8 to 5/8 inch long, usually purplish at maturity.

Flowering occurs in the early summer. These annual plants will germinate in fall or spring (fall is more common), and full maturity to death usually occurs in summer.

Cheatgrass invades rangelands, pastures, prairies, and other open areas. It has the potential to completely alter the ecosystems it invades.



MAP: CHEATGRASS



TERRESTRIAL PLANT SUBCOMMITTEE
GREATER YELLOWSTONE COORDINATING COMMITTEE
NO SCALE
NOTE: DATA CURRENT AS OF 12/31/2010