

# CANADA THISTLE

(*Cirsium arvense*)

**GROWTH HABIT:** Perennial, erect, up to 4 inches tall.

**LEAVES:** Varies from light to dark green, oblong or lance shaped, deeply cut, spiny toothed margins (some may be smooth); slightly hairy below, tremendous leaf variability.

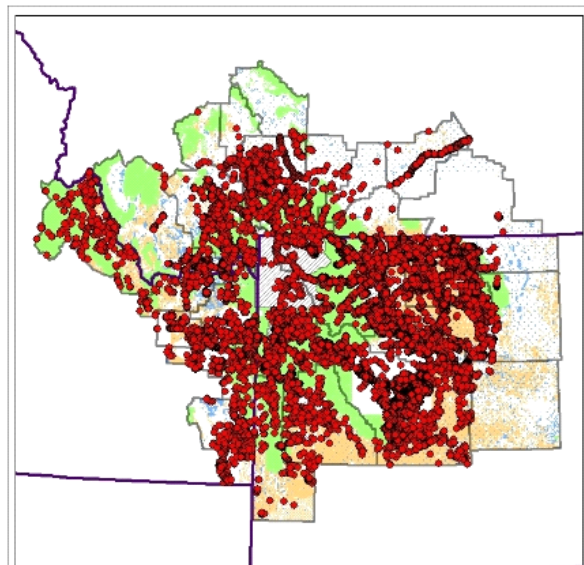
**STEMS:** Smooth to slightly hairy, branched at top.

**FLOWER:** Small bristly clusters, about a 1/2 inch in diameter, light lavender to deep rose purple. Plants are male or female.

**ROOTS:** Extensive, fleshy, creeping rootstocks.

**SEEDS:** Smooth, light to dark brown, tipped by a cupped conical point, about 1/8 inch long.

**OTHER:** Reproduces by seed and creeping rootstocks.



**MAP: CANADA THISTLE**

Legend

- Canada Thistle
- States
- Counties
- BLM
- OTNP
- State Lands
- USFS
- YNP

TERRESTRIAL PLANT SUBCOMMITTEE  
GREATER YELLOWSTONE COORDINATING COMMITTEE  
NO SCALE  
NOTE: DATA CURRENT AS OF 12/31/2010